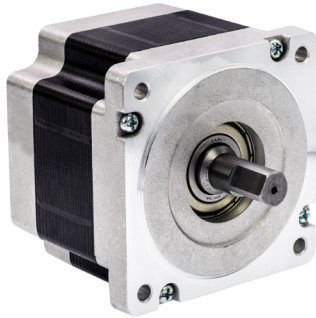


86BLF

BRUSHLESS DC MOTOR



General Specifications

| | |
|-----------------------|-------------------------------|
| Winding Type | Star |
| Hall effect angle | 120° Electrical angle |
| Insulation Class | B |
| Ambient Temperature | -20°C~+50°C |
| Insulation Resistance | 100MΩ Min.500VC DC |
| Dielectric Strength | 600VAC 1 minute |
| Max Radial Force | 220N (10mm from front flange) |
| Max Axial Force | 60N |

Technical Specifications

| Model | No. of Poles | No. of Phase | Rated Voltage (VDC) | Rated Torque (N.m) | Rated Speed (RPM) | Rated Current (Amps) | Output Power (Watts) | Peak Torque (N.m) | Peak Current (Amps) | Torque Constant (N.m/Amps) | Back EMF Constant (V/kRPM) | Motor Height L (mm) | Motor Weight (kg) |
|----------|--------------|--------------|------------------------|-----------------------|----------------------|-------------------------|-------------------------|----------------------|------------------------|-------------------------------|-------------------------------|------------------------|----------------------|
| 86BLF01 | 8 | 3 | 48 | 1.40 | 3000 | 12.17 | 439 | 4.20 | 36.5 | 0.115 | 12.0 | 94.0 | 2.99 |
| 86BLF02A | | | 48 | 1.05 | 3000 | 8.67 | 329 | 3.15 | 26.0 | 0.121 | 12.6 | 80.5 | 2.44 |
| 86BLF03 | | | 48 | 0.70 | 3000 | 5.33 | 220 | 2.10 | 16.0 | 0.130 | 13.7 | 67.0 | 1.78 |
| 86BLF06C | | | 48 | 1.80 | 3000 | 16.33 | 565 | 5.40 | 49.0 | 0.110 | 12.0 | 107.5 | 3.39 |
| 86BLF07 | | | 48 | 2.10 | 3000 | 19.67 | 660 | 6.30 | 59.0 | 0.106 | 11.2 | 124.0 | 4.07 |

* Products can be customized by special request.

Wiring Diagram

| FUNCTION/功能 | COLOR/颜色 | | |
|-------------|----------|---|--------------|
| +5V | WHITE | 白 | UL1007 26AWG |
| HALL A | RED | 红 | |
| HALL B | YELLOW | 黄 | |
| HALL C | BLUE | 蓝 | |
| GND | BLACK | 黑 | UL1015 18AWG |
| PHASE A | RED | 红 | |
| PHASE B | YELLOW | 黄 | |
| PHASE C | BLUE | 蓝 | |

Mechanical Dimension

